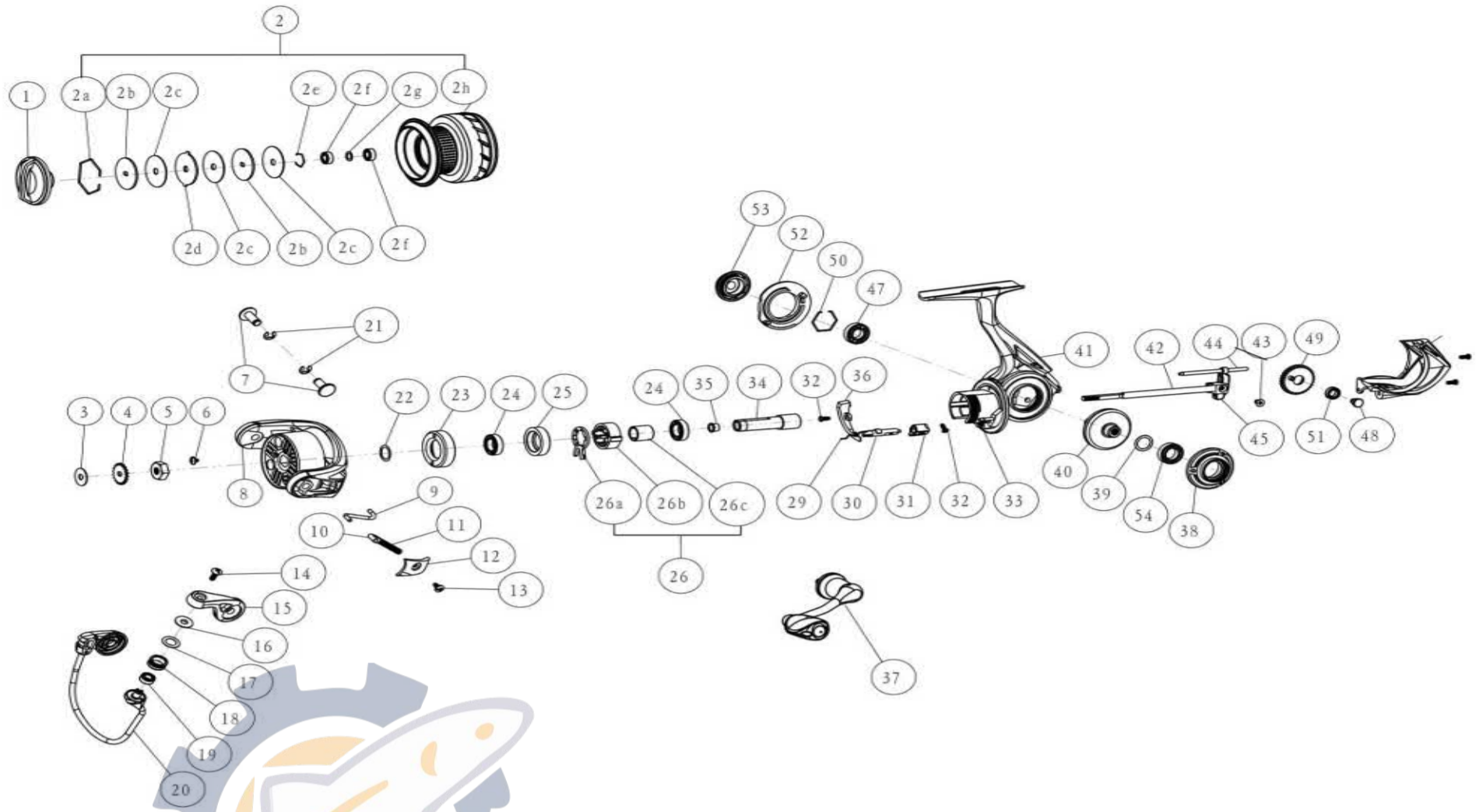


# QUANTUM

## TH30A



### Quantum THROTTLE - TH30A Part List

| Key No. | Description                   | Part No.  | Qty | Key No. | Description                | Part No.  | Qty |
|---------|-------------------------------|-----------|-----|---------|----------------------------|-----------|-----|
| 1       | Drag Knob Assembly            | BAA332-04 | 1   | 25      | Clutch Bearing Adapter     | TAD190-01 | 1   |
| 2       | Spool Kit Include             | UAD421-02 | 1   | 26      | One way clutch kit include | TAD363-02 | 1   |
|         | 2A-Retainer Ring              | BAA038-01 | 1   |         | 26A-One Way Clutch lever   | BAA064-02 | 1   |
|         | 2B-Drag Washer "D"            | TAD080-01 | 2   |         | 26B-One Way Clutch         | BAA063-02 | 1   |
|         | 2C-Drag Washer "B"            | BAA033-01 | 3   |         | 26C-Sleeve                 | TAD139-02 | 1   |
|         | 2D-Drag Washer "A"            | CAA081-01 | 1   | 29      | Stopper Cam spring         | TAD089-01 | 1   |
|         | 2E-Retainer Ring              | BAA119-01 | 1   | 30      | Stopper Cam                | BAA090-01 | 1   |
|         | 2F-Ball Bearing               | GH202-01  | 2   | 31      | Stopper Lever              | BAA059-01 | 1   |
|         | 2G-Bushing                    | BAA076-01 | 1   | 32      | Stopper Lever Screw        | BAA135-01 | 1   |
|         | 2H-Spool Assembly             | UAD321-02 | 1   | 33      | Clutch spring              | BAA216-01 | 1   |
| 3       | Spool Adjust Washer           | TAD030-01 | 2   | 34      | Pinion Gear                | TAD011-01 | 1   |
| 4       | Clicker Gear                  | TAD037-01 | 1   | 35      | Pinion Bushing             | BAA213-01 | 1   |
| 5       | Rotor Nut                     | BAA006-01 | 1   | 36      | Trip Ramp                  | TAD119-01 | 1   |
| 6       | Rotor Nut Lock Screw          | BAA094-01 | 1   | 37      | Handle Assembly            | UAD318-01 | 1   |
| 7       | Pin - Arm Lever / Bail Holder | TAD042-02 | 2   | 38      | Body Side Ring             | TAD142-02 | 1   |
| 8       | Rotor                         | UAD009-02 | 1   | 39      | Drive Gear Adjust Washer   | BAA105-02 | 1   |
| 9       | Kick Lever                    | UAD019-01 | 1   | 40      | Drive Gear Assembly        | BAD312-01 | 1   |
| 10      | Actuator                      | BAA031-01 | 1   | 41      | Body Assembly              | TAD301-02 | 1   |
| 11      | Bail Spring                   | BAA022-01 | 1   | 42      | Main Shaft                 | TAD015-01 | 1   |
| 12      | Arm Lever Cover               | UAD087-01 | 1   | 43      | Main Shaft Screw           | BAA100-01 | 1   |
| 13      | Arm Lever Cover Screw         | TAD077-01 | 1   | 44      | O/S Guide Pin              | TAD093-01 | 1   |
| 14      | Line Roller Screw             | BAA108-01 | 1   | 45      | O/S Slider                 | TAD025-01 | 1   |
| 15      | Arm Lever                     | TAD007-02 | 1   | 46      | Body Rear Cap              | TAD140-02 | 1   |
| 16      | Line Roller Collar            | CAA102-01 | 1   | 47      | Body Ball Bearing          | TAD157-01 | 1   |
| 17      | Line Roller Washer            | BAA102-01 | 1   | 48      | O/S Gear Pin               | TAD062-02 | 1   |
| 18      | Line Roller                   | BAA004-01 | 1   | 49      | O/S Gear                   | TAD053-01 | 1   |
| 19      | Line Roller Ball Bearing      | GH202-01  | 1   | 50      | Retainer Ring              | TAD038-01 | 1   |
| 20      | Bailwire Assembly             | UAD347-02 | 1   | 51      | O/S Gear Bearing           | CT157-02  | 1   |
| 21      | "E" clip                      | QW120-01  | 2   | 52      | Body Trim Ring             | TAD145-02 | 1   |
| 22      | Rotor Adjust Washer           | BAA105-03 | 1   | 53      | Handle Cap                 | TAD054-02 | 1   |
| 23      | Clutch Bearing Cap            | TAD040-01 | 1   | 54      | Body Ball Bearing          | CAA157-01 | 1   |
| 24      | Pinion Ball Bearing           | CAA157-02 | 2   |         |                            |           |     |